

# State of Wyoming Corner Record

(In compliance with the CORNER PERPETUATION AND FILING ACT, Wyoming Statutes, 2013 Section 33-29-901 through 33-29-910, and the Rules and Regulations of the Board of Professional Engineers and Professional Land Surveyors)

Reverse side of this form may be used if more space is needed.

Record of original survey and citation of source of historical information (if corner is lost or obliterated). Description of corner monumentation evidence found and/or monument and accessories established to perpetuate the location of this corner. Sketch of relative location of monument, accessories, and reference points with course and distance to adjacent corner(s) (if determined in this survey). Method and rationale for reestablishment of lost or obliterated corner.

METHOD FOR REESTABLISHMENT OF LOST CORNER: Used GLO proportioning method.

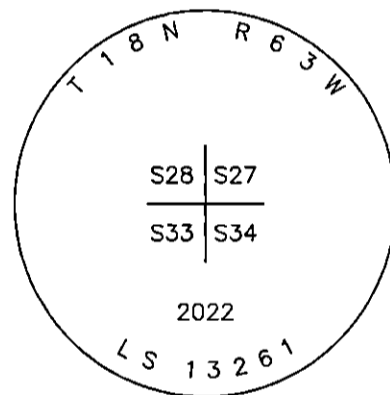
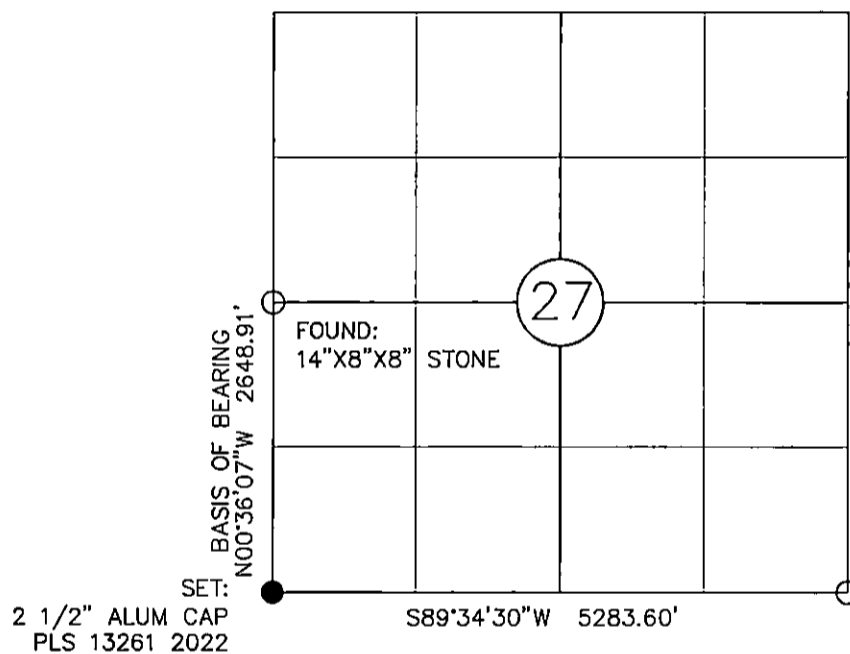
ORIGINAL GLO RECORD: Sandstone 16"x12"x5" marked with 1 notch on S. side and with 3 notches on E. side

MONUMENT FOUND: No monument found. Evidence of fence found.

MONUMENT SET: 2 1/2" Aluminum Cap on a #6 Rebar, three (3) inches above ground, stacked stones around monument.

All dimensions are in US Survey Feet

## Monument location



FOUND:  
2 1/2" ALUM CAP  
PLS 13261 2022

## Monument Inscription

Date of Field Work: 9/26/2022

Office Reference: 1903-016

See Reverse Side for References

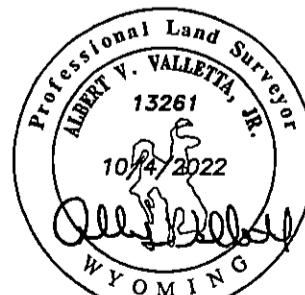
## Cross Index Plat

	1	2	3	4	5	6	7	8	9	10	11	12	13	14	15	16	17	18	19	20	21	22	23	24	25	
A	+	+	+	+	+	+	+	+	+	+	+	+	+	+	+	+	+	+	+	+	+	+	+	+	+	A
B	+	+	+	+	+	+	+	+	+	+	+	+	+	+	+	+	+	+	+	+	+	+	+	+	+	B
C	+	6	+	+	5	+	+	+	+	4	+	+	+	3	+	+	+	+	+	2	+	+	+	+	+	C
D	+	+	+	+	+	+	+	+	+	+	+	+	+	+	+	+	+	+	+	+	+	+	+	+	+	D
E	+	+	+	+	+	+	+	+	+	+	+	+	+	+	+	+	+	+	+	+	+	+	+	+	+	E
F	+	+	+	+	+	+	+	+	+	+	+	+	+	+	+	+	+	+	+	+	+	+	+	+	+	F
G	+	7	+	+	8	+	+	+	+	9	+	+	+	10	+	+	+	+	+	11	+	+	+	+	+	G
H	+	+	+	+	+	+	+	+	+	+	+	+	+	+	+	+	+	+	+	+	+	+	+	+	+	H
J	+	+	+	+	+	+	+	+	+	+	+	+	+	+	+	+	+	+	+	+	+	+	+	+	+	J
K	+	+	+	+	+	+	+	+	+	+	+	+	+	+	+	+	+	+	+	+	+	+	+	+	+	K
L	+	18	+	+	17	+	+	+	+	16	+	+	+	15	+	+	+	+	+	14	+	+	+	+	+	L
M	+	+	+	+	+	+	+	+	+	+	+	+	+	+	+	+	+	+	+	+	+	+	+	+	+	M
N	+	+	+	+	+	+	+	+	+	+	+	+	+	+	+	+	+	+	+	+	+	+	+	+	+	N
O	+	+	+	+	+	+	+	+	+	+	+	+	+	+	+	+	+	+	+	+	+	+	+	+	+	O
P	+	19	+	+	20	+	+	+	+	21	+	+	+	22	+	+	+	+	+	23	+	+	+	+	+	P
Q	+	+	+	+	+	+	+	+	+	+	+	+	+	+	+	+	+	+	+	+	+	+	+	+	+	Q
R	+	+	+	+	+	+	+	+	+	+	+	+	+	+	+	+	+	+	+	+	+	+	+	+	+	R
S	+	+	+	+	+	+	+	+	+	+	+	+	+	+	+	+	+	+	+	+	+	+	+	+	+	S
T	+	30	+	+	29	+	+	+	+	28	+	+	+	27	+	+	+	+	+	26	+	+	+	+	+	T
U	+	+	+	+	+	+	+	+	+	+	+	+	+	+	+	+	+	+	+	+	+	+	+	+	+	U
V	+	+	+	+	+	+	+	+	+	+	+	+	+	+	+	+	+	+	+	+	+	+	+	+	+	V
W	+	+	+	+	+	+	+	+	+	+	+	+	+	+	+	+	+	+	+	+	+	+	+	+	+	W
X	+	31	+	+	32	+	+	+	+	33	+	+	+	34	+	+	+	+	+	35	+	+	+	+	+	X
Y	+	+	+	+	+	+	+	+	+	+	+	+	+	+	+	+	+	+	+	+	+	+	+	+	+	Y
Z	+	+	+	+	+	+	+	+	+	+	+	+	+	+	+	+	+	+	+	+	+	+	+	+	+	Z

Firm/Agency, Address  
DALEY LAND SURVEYING, INC.  
17011 LINCOLN AVE., #361  
PARKER, CO 80134  
(303) 953-9841

This corner record was prepared by me or under my direction and supervision.

SEAL & SIGNATURE



FOR AND ON BEHALF OF  
DALEY LAND SURVEYING, INC.,  
ALBERT V. VALLETTA, JR., PLS 13261



RECP #: 849643  
RECORDED 12/27/2022 AT 11:17 AM BK# 2817 PG# 583  
Debra K. Lee, CLERK OF LARAMIE COUNTY, WY PAGE 1 OF 2

Corner Name Southwest Corner Section 27, T 18 N, R 63 W, 6th P.M.

Cross-Index No.: V-13

County: LARAMIE